

Thalia Stackable Aluminum Banquet Chair

SKU: BQT-2052-AL



PRODUCT SPECIFICATIONS

Thalia Banquet Chair Specifications

Overall Height	36.5 in
Overall Width	16.5 in
Overall Depth	23 in
Seat Height	18 in
Seat Width	16 in
Seat Depth	16 in
Seat Foam Thickness	2.5 in
Weight	19 lb
Weight Capacity	400 pounds
Frame Material	Aluminum
COM Seat Total	0.4 yards
COM Back Total	0.7 yards

Discover the exceptional event seating offered by the Thalia Banquet Chair.

With its combination of durability and sophistication, this chair boasts a robust aluminum frame, ensuring enduring quality. The **flex-back** design offers unparalleled comfort, elevating your guests' experience to the next level. Additionally, its **stackable** design and **glides** make storage and arrangement effortless, making it the ideal choice for any event setting.

PRODUCT FEATURES

- 1 Stacks 10 High
- 2 Nickel Plated Swivel Glides
- 3 10 Year Warranty
- 4 Cal 117 Fire Safety Rating
- 5 Fully Welded 12 Gauge Aluminum Frame

Thalia Customization

CRAFTED FOR UNIQUE BRANDS

Upholstery Options

Visit our [Upholstery Collection](#) page to search through thousands of upholstery options.

Our company offers the option of COM (Customer's Own Material) in our chair production, enabling clients to select their own materials to create chairs that perfectly align with their unique preferences

Chair Frame Finishes



Solid Black



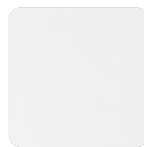
Texture
Black



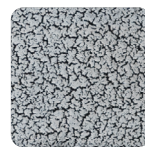
Gunmetal



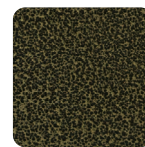
Metallic
Silver



White



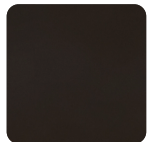
Silver Vein



Gold Vein



Copper
Vein



Metallic
Brown



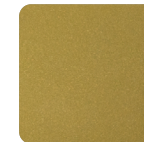
Copper
Sparkle



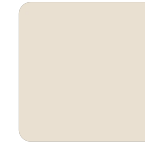
Walnut



Bronze
Sparkle



Metallic
Gold



Cream

Add-Ons



Ganging mechanism

Upgrade your chairs with our practical ganging mechanism. Seamlessly link one chair to another, providing stability and alignment for events and gatherings.



Webbed seating

Elevate your banquet chairs with the addition of webbed seating, designed for enhanced comfort.