

# Everett Stackable Aluminum Banquet Chair

SKU: BQT-2042-AL



Discover the exceptional seating comfort offered by the Everett Banquet Chair.

Thoughtfully designed to seamlessly marry durability and elegance, this chair showcases a sturdy aluminum frame that guarantees enduring performance. What sets it apart even more is its **stackable** design and **glide feature**, which simplify both storage and arrangement, making it a versatile and pragmatic choice.

## PRODUCT FEATURES

- 1 Stacks 10 High
- 2 Nickel Plated Swivel Glides
- 3 10 Year Warranty
- 4 Cal 117 Fire Safety Rating
- 5 Fully Welded 12 Gauge Aluminum Frame



## PRODUCT SPECIFICATIONS

Everett Banquet Chair Specifications	
Overall Height	38 in
Overall Width	17.5 in
Overall Depth	23 in
Seat Height	18 in
Seat Width	15 in
Seat Depth	15 in
Seat Foam Thickness	2.5 in
Weight	11 lb
Weight Capacity	400 pounds
Frame Material	Aluminum
COM Seat Total	0.35 yards
COM Back Total	0.45 yards

# Everett Customization

CRAFTED FOR UNIQUE BRANDS

## Upholstery Options

Visit our [Upholstery Collection](#) page to search through thousands of upholstery options.

Our company offers the option of COM (Customer's Own Material) in our chair production, enabling clients to select their own materials to create chairs that perfectly align with their unique preferences

## Chair Frame Finishes



Solid Black



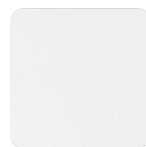
Texture  
Black



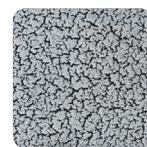
Gunmetal



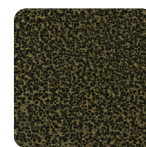
Metallic  
Silver



White



Silver Vein



Gold Vein



Copper  
Vein



Metallic  
Brown



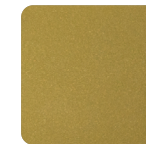
Copper  
Sparkle



Walnut



Bronze  
Sparkle



Metallic  
Gold



Cream

## Add-Ons



### Ganging mechanism

Upgrade your chairs with our practical ganging mechanism. Seamlessly link one chair to another, providing stability and alignment for events and gatherings.



### Webbed seating

Elevate your banquet chairs with the addition of webbed seating, designed for enhanced comfort.