

Eldric Stackable Aluminum Banquet Chair

SKU: BQT-1052-AL



Discover the exceptional event seating offered by the Eldric Banquet Chair.

With its combination of durability and sophistication, this chair boasts a robust aluminum frame, ensuring enduring quality. The **flex-back** design offers unparalleled comfort, elevating your guests' experience to the next level. Additionally, its **stackable** design and **glides** make storage and arrangement effortless, making it the ideal choice for any event setting.



PRODUCT SPECIFICATIONS

| Eldric Banquet Chair Specifications | |
|-------------------------------------|------------|
| Overall Height | 36.5 in |
| Overall Width | 16.5 in |
| Overall Depth | 21.5 in |
| Seat Height | 18 in |
| Seat Width | 16 in |
| Seat Depth | 16 in |
| Seat Foam Thickness | 2.5 in |
| Weight | 16 lb |
| Weight Capacity | 400 pounds |
| Frame Material | Aluminum |
| COM Seat Total | 0.4 yards |
| COM Back Total | 0.7 yards |

PRODUCT FEATURES

- 1 Stacks 10 High
- 2 Nickel Plated Swivel Glides
- 3 10 Year Warranty
- 4 Cal 117 Fire Safety Rating
- 5 Fully Welded 12 Gauge Aluminum Frame

Eldric Customization

CRAFTED FOR UNIQUE BRANDS

Upholstery Options

Visit our [Upholstery Collection](#) page to search through thousands of upholstery options.

Our company offers the option of COM (Customer's Own Material) in our chair production, enabling clients to select their own materials to create chairs that perfectly align with their unique preferences

Chair Frame Finishes



Solid Black



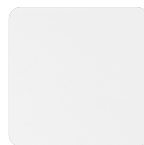
Texture
Black



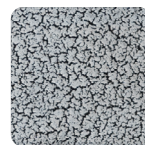
Gunmetal



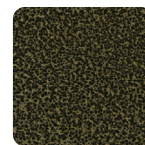
Metallic
Silver



White



Silver Vein



Gold Vein



Copper
Vein



Metallic
Brown



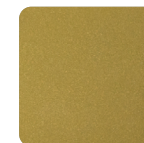
Copper
Sparkle



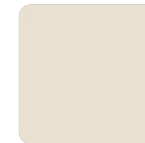
Walnut



Bronze
Sparkle



Metallic
Gold



Cream

Add-Ons



Ganging mechanism

Upgrade your chairs with our practical ganging mechanism. Seamlessly link one chair to another, providing stability and alignment for events and gatherings.



Webbed seating

Elevate your banquet chairs with the addition of webbed seating, designed for enhanced comfort.