

Atticus Stackable Aluminum Banquet Chair

SKU: BQT-2572-AL

Experience Excellence with Superior Seating,
Your Hospitality Partner of Choice.

Discover the Atticus Banquet Chair, where durability and sophistication seamlessly unite.

Crafted with a resilient aluminum frame, this chair ensures long-lasting reliability for all your gatherings. Its ergonomic design promises unparalleled comfort, complete with a convenient **handhold**. Effortless **stacking** and glides make setup and storage a breeze, elevating your event experience to new heights.



PRODUCT SPECIFICATIONS

Atticus Banquet Chair Specifications	
Overall Height	37 in
Overall Width	19 in
Overall Depth	24.5 in
Seat Height	18 in
Seat Width	19.5 in
Seat Depth	19.5 in
Seat Foam Thickness	2.5 in
Weight	16 lb
Weight Capacity	400 pounds
Frame Material	Aluminum
COM Seat Total	0.4 yards
COM Back Total	0.45 yards

PRODUCT FEATURES

- 1 Stacks 5 High
- 2 Nickel Plated Swivel Glides
- 3 10 Year Warranty
- 4 Cal 117 Fire Safety Rating
- 5 Fully Welded 12 Gauge Aluminum Frame

Atticus Customization

CRAFTED FOR UNIQUE BRANDS

Upholstery Options

Visit our [Upholstery Collection](#) page to search through thousands of upholstery options.

Our company offers the option of COM (Customer's Own Material) in our chair production, enabling clients to select their own materials to create chairs that perfectly align with their unique preferences

Chair Frame Finishes



Solid Black



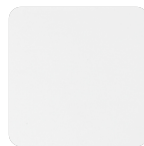
Texture
Black



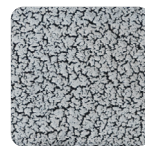
Gunmetal



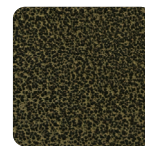
Metallic
Silver



White



Silver Vein



Gold Vein



Copper
Vein



Metallic
Brown



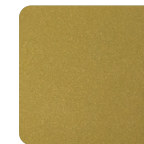
Copper
Sparkle



Walnut



Bronze
Sparkle



Metallic
Gold



Cream

Add-Ons



Ganging mechanism

Upgrade your chairs with our practical ganging mechanism. Seamlessly link one chair to another, providing stability and alignment for events and gatherings.



Webbed seating

Elevate your banquet chairs with the addition of webbed seating, designed for enhanced comfort.