

Atticus Stackable Aluminum Banquet Armchair

SKU: BQT-1572-AL

Experience Excellence with Superior Seating,
Your Hospitality Partner of Choice.

Introducing the Atticus Banquet Armchair, where durability and sophistication effortlessly combine.

Crafted with a sturdy aluminum frame, this armchair guarantees enduring reliability for all your gatherings. Its ergonomic design offers unmatched comfort, featuring a convenient **handhold** for added convenience. With effortless **stacking** and glides for smooth movement, this chair simplifies setup and storage, enhancing your event experience to a whole new level.



PRODUCT SPECIFICATIONS

Atticus Banquet Armchair Specifications	
Overall Height	37 in
Overall Width	23 in
Overall Depth	24.5 in
Seat Height	18 in
Seat Width	20 in
Seat Depth	20 in
Seat Foam Thickness	2.5 in
Weight	28.5 lb
Weight Capacity	400 pounds
Frame Material	Aluminum
COM Seat Total	0.4 yards
COM Back Total	0.45 yards

PRODUCT FEATURES

- 1 Stacks 5 High
- 2 Nickel Plated Swivel Glides
- 3 10 Year Warranty
- 4 Cal 117 Fire Safety Rating
- 5 Fully Welded 12 Gauge Aluminum Frame

Atticus Customization

CRAFTED FOR UNIQUE BRANDS

Upholstery Options

Visit our [Upholstery Collection](#) page to search through thousands of upholstery options.

Our company offers the option of COM (Customer's Own Material) in our chair production, enabling clients to select their own materials to create chairs that perfectly align with their unique preferences

Chair Frame Finishes



Solid Black



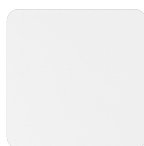
Texture
Black



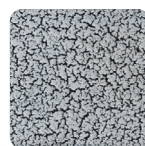
Gunmetal



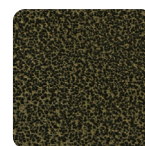
Metallic
Silver



White



Silver Vein



Gold Vein



Copper
Vein



Metallic
Brown



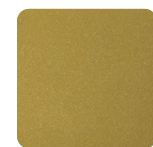
Copper
Sparkle



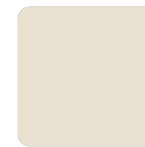
Walnut



Bronze
Sparkle



Metallic
Gold



Cream

Add-Ons



Ganging mechanism

Upgrade your chairs with our practical ganging mechanism. Seamlessly link one chair to another, providing stability and alignment for events and gatherings.



Webbed seating

Elevate your banquet chairs with the addition of webbed seating, designed for enhanced comfort.