

Artisan Stackable Steel Banquet Chair

SKU: BQT-5042-ST

Experience Excellence with Superior Seating,
Your Hospitality Partner of Choice.

Introducing the Artisan Steel Banquet Chair: Uniting
Durability, Sophistication, and Versatility.

Crafted with a robust steel frame, this chair assures
enduring performance, perfect for all your events. Its
ergonomic design ensures unmatched comfort, complete
with a convenient **handhold** for guest satisfaction.
Furthermore, it provides the convenience of **stackability**
and glides, elevating its suitability for your hospitality needs.



PRODUCT SPECIFICATIONS

Artisan Banquet Chair Specifications	
Overall Height	36.5 in
Overall Width	18 in
Overall Depth	24 in
Seat Height	18 in
Seat Width	15.5 in
Seat Depth	15.5 in
Seat Foam Thickness	2.5 in
Weight	14 lb
Weight Capacity	500 pounds
Frame Material	Steel
COM Seat Total	0.35 yards
COM Back Total	0.45 yards

PRODUCT FEATURES

- 1 Stacks 10 High
- 2 Nickel Plated Swivel Glides
- 3 10 Year Warranty
- 4 Cal 117 Fire Safety Rating
- 5 Fully Welded 18 Gauge Steel Frame

Artisan Customization

CRAFTED FOR UNIQUE BRANDS

Upholstery Options

Visit our [Upholstery Collection](#) page to search through thousands of upholstery options.

Our company offers the option of COM (Customer's Own Material) in our chair production, enabling clients to select their own materials to create chairs that perfectly align with their unique preferences

Chair Frame Finishes



Solid Black



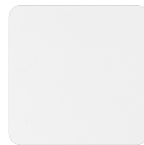
Texture
Black



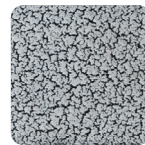
Gunmetal



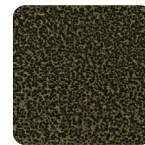
Metallic
Silver



White



Silver Vein



Gold Vein



Copper
Vein



Metallic
Brown



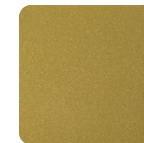
Copper
Sparkle



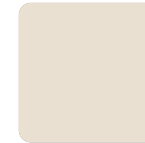
Walnut



Bronze
Sparkle



Metallic
Gold



Cream

Add-Ons



Ganging mechanism

Upgrade your chairs with our practical ganging mechanism. Seamlessly link one chair to another, providing stability and alignment for events and gatherings.



Webbed seating

Elevate your banquet chairs with the addition of webbed seating, designed for enhanced comfort.